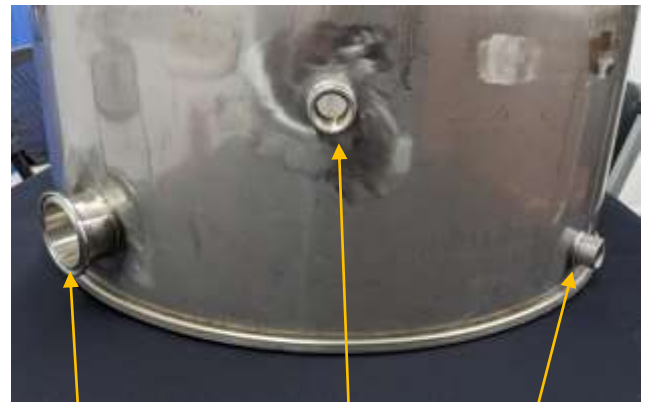




Steamer Assembly R 101920



Cut down Assembled Sterilizer



Heater Port

Filler Port

Drain



Optional heater w /clamp and gasket



Teflon Tape must be used on all NPT threaded connections. It is not necessary on the GHT (garden hose) connections as they have a washer.



With the float in a vertical position tighten the lock nut to hold in place.





Connect Pressure regulator directly to the faucet

