

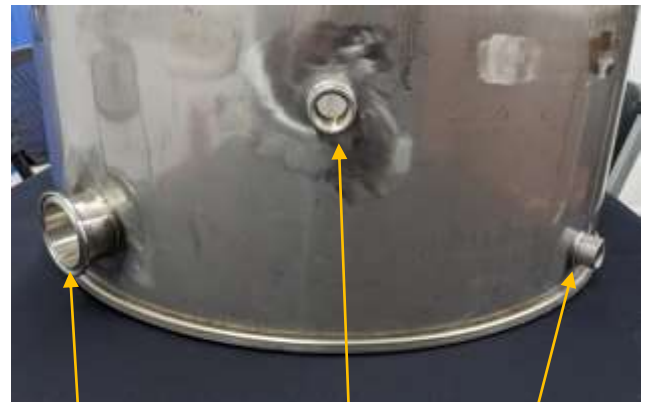


# Steamer Assembly & Maintenance

R092921



Cut down Assembled Sterilizer



Heater Port

Filler Port

Drain



Optional heater w /clamp and gasket



Teflon Tape must be used on all NPT threaded connections. It is not necessary on the GHT (garden hose) connections as they have a washer.



When attaching the float ball to the arm, only twist the ball a couple of turns. Use the backer nut to tighten the ball to the arm.



With the float in a vertical position tighten the lock nut to hold in place.





Connect Pressure regulator directly to the  
faucet  
Only use cold or room temperature water



# Maintenance

Hard water is the number one enemy of your mushroom steamer. The calcium buildup (scale) from hard water causes premature element failure, allows the float valve to leak, and can cause pressure regulator failure. Unfortunately, for your substrate steamer, hard water is often common. If you have a whiteish buildup on your element, then you have hard water.

To combat hard water, the minerals must be filtered from the water.

- Install [water softener](#) if allowed in your area. Many jurisdictions have disallowed the salt style water softener.
- [Scale filter](#), also called no-salt water softener. Smaller sizes are often marketed towards mist systems.

No matter your water quality, periodic maintenance of your steamer is a must.

## Element:

Deposits can be removed from your element by scrubbing with a green scotchbrite. If your water is hard, Make a soaker tube for your element. A small section of 2-inch pvc pipe and an end cap is all you need. Soak the element in a solution of CLR or a [descaler](#) for tankless water heaters.



## Float valve:

The float valve can be disassembled by removing the small cotter key or nut. Thoroughly clean the seat and silicone gasket. If your valve develops a small drip from hard water, it may be necessary to add a water timer to your system to ensure the water turns off at the end of the cycle. This can prevent the small drip from turning into a flood.

**Pressure regulator:**

The pressure regulator should be installed at the tap or if using a portable filter immediately after the filter. DO NOT use pipe dope or Teflon tape. The vent hole should be unobstructed. Only use cold or room temperature water

Periodically test the pressure regulator. A simple test is to stop the water from exiting the regulator with your thumb. Most people can hold back 10 psi. If you are unsure, try stopping the water coming from the tap, both with and without the regulator. The difference should be obvious. If in doubt, purchase a [water hose pressure gauge](#) .

**Tank:**

The tank should be cleaned as necessary. Excess debris can keep the float valve from opening.

Your maintenance schedule is determined by your water quality. If your source water is clean and soft, the steamer will need to be cleaned less often than if your water is hard and/or dirty.