



## Mushroom Controller Manual

(MAXWELL FT100 controller)

**\*\*WHEN OPERATING ON 220V POWER, THE  
CONTROLLER REQUIRES 4-WIRE SERVICE\*\***

**\*\*OPERATING ON 3-WIRE SERVICE WILL  
CAUSE DAMAGE NOT COVERED BY YOUR  
WARRANTY\*\***

**\*\*THE MUSHROOM SUBSTRATE STEAMER  
IS PRESET AND RECOMMENDED TO BE RUN  
AT 200°F. IF YOUR LOCATION ALLOWS FOR  
THE TEMPERATURE SETTING TO BE RAISED,  
WE RECOMMEND DOING SO IN 1°-2°  
INCREMENTS UNTIL YOU REACH YOUR  
MAXIMUM SET TEMPERATURE\*\***

**\*\*IF YOUR UNIT DOES NOT CYCLE OR  
CONTINUALLY PRODUCES LARGE AMOUNTS  
OF STEAM THE TEMPERATURE IS SET TOO  
HIGH\*\***

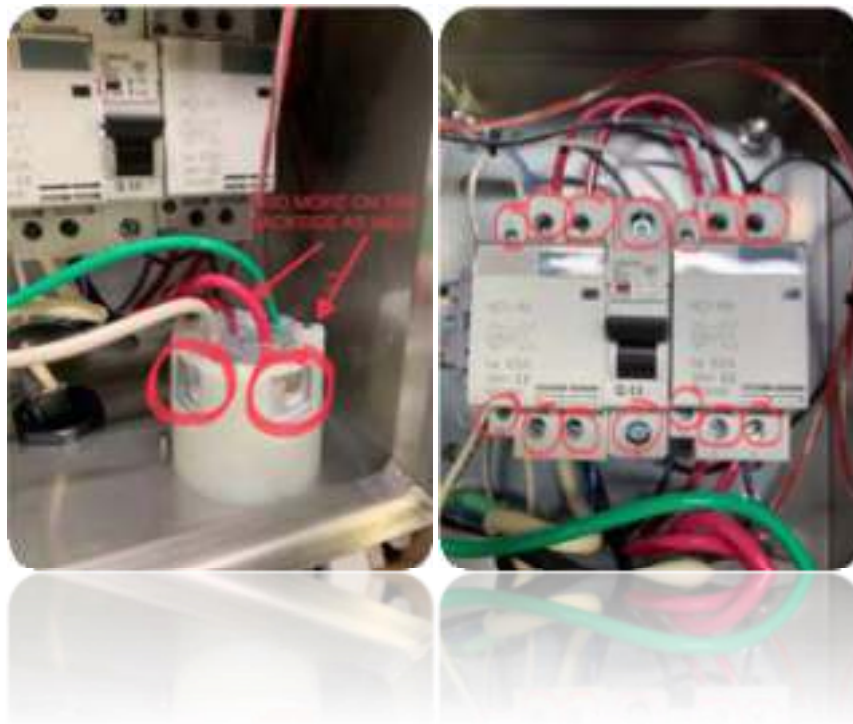
**\*\*WE RECOMMEND STAYING AT LEAST 7°  
BELOW YOUR LOCAL BOILING POINT.  
HOWEVER, PLEASE REMEMEBER THAT THE**

WEATHER CAN AFFECT YOUR BOILING  
POINT. SETTING YOUR TEMPERATURE TOO  
CLOSE TO YOUR BOILING POINT MAY  
RESULT IN FAILURE IF ATMOSPHERIC  
CONDITIONS ARE WORKING AGAINST  
YOU.\*\*

\*\*BEFORE DOING ANYTHING, FILL KETTLE  
WITH WATER ABOVE THE ELEMENT\*\*

\*\*ENERGIZING ELEMENT OUTSIDE OF  
WATER WILL CAUSE IMMEDIATE FAILURE\*\*

**\*\*BEFORE RUNNING THE CONTROLLER,  
ITEMS MAY HAVE SHIFTED DURING  
TRANSIT. MAKE SURE WIRES AT CALLED  
OUT TERMINALS ARE SECURE\*\***



This controller is pre-set at 200°F. This temperature is for elevations up to 6,000 ft. The timer is also pre-set to 18hrs or 1080 mins.

**Step 1: The controller is set pre-set to 200°F.**

To adjust the temperature above the preset temperature of **200°F** tap the **< key** then tap the **UP** arrow to adjust the digits (see pictures below).



**Step 2: The controller is pre-set with a run time of 18hrs or 1080 mins.**

To adjust the run timer from the preset time of **18hrs**, press the **SET** button until you see **t1**. This will display **1080** underneath the **t1**. To adjust higher or lower press the **UP** or **DOWN** arrows to the number of minutes you prefer.

**Step 3:**

If you are unable to adjust the **t1** setting then press the **SET** button until you get back to the main temperature setting screen. Once you get here press and hold the **SET** button for at least 3 seconds until you see **P1**. Press the **SET** button repeatedly until you see **LCK** make

sure this setting reads **101**. If for some reason it does not, use the **UP** and **DOWN** arrows as well as the **LEFT** arrow to adjust this.



**Step 4:**

Now you are ready to start your sterilization process. Turn the element switch back on. When the kettle reaches the desired temperature, the timer will start. **PROG** on the controller will start flashing. To check the amount of time left in the sterilization process you will tap the **SET** button 3 times and see **tE** displayed on the screen. This will let you know the amount of time that has elapsed.

**Step 5:**

When the sterilization process is complete, **END** will appear in **GREEN** on the screen. To reset the timer, hold the **UP** arrow for about **5 seconds**. End will disappear and the timer will restart counting once the set temperature is reached.



**The sterilization process is now complete!**